

# Arizona State University

## Sun Devil Percussion

### Fall Auditions 2024

Welcome Percussionists! We would like to take this opportunity to welcome all students who are interested in auditioning for the Sun Devil Percussion section. This section has grown significantly in the past few years and we are excited to share that with you. Please read the following material, as this information will be critical for you. Any further questions regarding the percussion section can be directed to me.

Sincerely,

Roberto Paz  
Arizona State University  
rvpaz@asu.edu

<b>STEP 1</b>	
Fill out the Gold Form.	
<a href="https://sundevilband.wufoo.com/forms/20242025-sun-devil-marching-band/">https://sundevilband.wufoo.com/forms/20242025-sun-devil-marching-band/</a>	
<b>STEP 2: Show up for Auditions</b>	
<b>Saturday   May 11, 2024</b>	
9:00am - 4:00pm	Auditions
<b>Sunday   May 12, 2024</b>	
9:00am - 4:00pm	Auditions

## AUDITION PROCESS

The exercises provided are essential for a successful percussionist. Every musical passage should be carefully learned at any given tempo with a variation of heights for the musician. This will help the performer understand the exercise at a higher level. Every percussion section should be ready to play any of these to demonstrate their skillset and abilities to the staff.

Please prepare and expect to perform this music.

## AUDITION LOCATION - Percussion Blockhouse

**Directions to Percussion Blockhouse:** From the University Drive and Rural Road intersection travel north on Rural Road. Take a right, going east, on E 6th Street toward the Verde Dickey Dome. Take an immediate left, going north again, once in the 59E parking lot. Follow the road as it travels north and then east again, soon opening up with a larger parking area on your right hand side. The Percussion Blockhouse will be on the south side of the parking lot.

## OUT OF STATE STUDENTS

Out of State students interested in auditioning should contact Roberto Paz immediately at [rvpaz@asu.edu](mailto:rvpaz@asu.edu). There is a video audition that can be submitted in lieu of an in person audition. This will help with any unnecessary costs for travel.

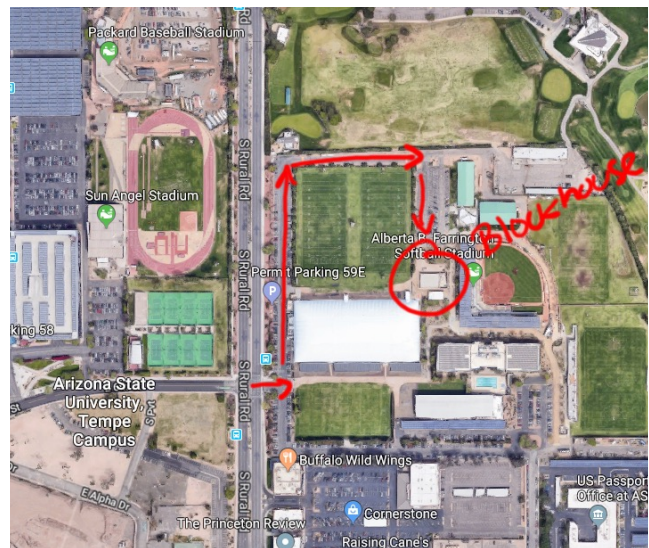
## TECHNIQUE

Details about technique are to be taken with the thought in mind that everyone has slightly different hand sizes, shapes and musculature. There is a vast amount of information about our craft as percussionists that simply cannot, and will not, be written because the nature of percussion is not one derived from text. Learning the details and minutia of what will be expected of you, as a Sun Devil Percussionist, will be grounded in your experiences with the staff and your ability to respond to that experience.

*Our approach is a relaxed approach with the goal of efficiency.*

Our battery uses a rudimental/drum corps approach and the snares play with traditional grip.

Our front ensemble is expected to be able to play both two mallet as well as four-mallet Steven's grip.



## EQUIPMENT

*Please bring sticks or mallets* to the corresponding instrument that you will audition on. We will provide snares, quads, bass drums, cymbals and keyboards.

All percussionists, should bring athletic clothes and water. Arizona is hot and we will be outside the entire time. The battery will be marching for part of the audition process.

Arizona State University uses Majestic Front Ensemble, Mapex Drums, Randall May International Carriers and Stands, Remo Drumheads, Vic Firth Sticks and Mallets, and Zildjian Cymbals.

## AUDITION AND MEMBERSHIP FEES

*There is a \$60 audition fee.*

**Upon acceptance**, there is an instrument fee of \$100 for all members.

## SEASON REHEARSALS

Our percussion rehearses at Arizona State University on Mondays from 4:30pm-6:30pm, Wednesdays from 4:30pm-8:00pm, and Fridays from 4:30pm-6:30pm. Game Days are typically all day. All rehearsals are mandatory. Prior to auditioning, this should be a clear expectation in your schedule in order to earn a spot.



## **MUSIC**

The following pieces are required and should be memorized. The indicated tempi on each exercise should be prepared and ready to be performed.

### **SNARE - QUADS - BASS**

*16th Note Timing | Eights | Accent Tap | Triplet Partial | Paradiddles | Triplet Diddle | Devils' Race*

### **CYMBALS**

*Business Time*

Cymbal players should be prepared to be active throughout the audition process.

### **FRONT ENSEMBLE**

*Octaves - All 12 Major Scales  
Eights - All 12 Major Scales  
Chromatic Runs Crossing  
Speed - All 12 Major Scales  
Double Lateral Strokes - All 12 Major Scales  
Double Vertical Strokes - All 12 Major Scales  
Single Alternating Strokes - All 12 Major Scales*

*All keyboard players should prepare a 2-3 minute piece to demonstrate their skills.*

# Arizona State University Sun Devil Marching Band Front Ensemble

## Octaves - Two Mallets

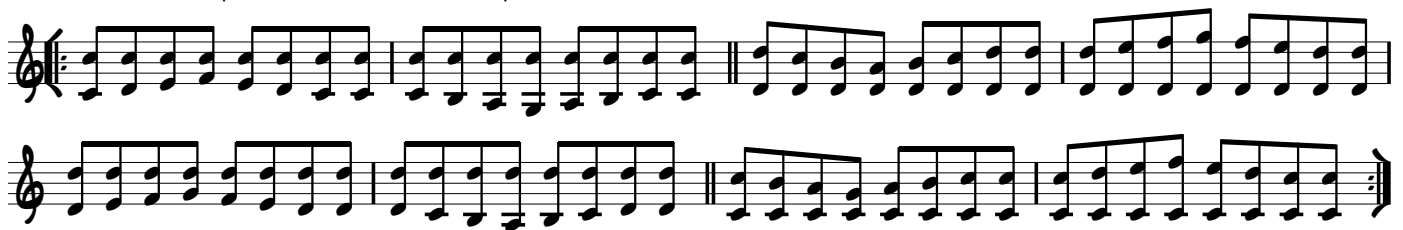
7/8 Octaves is a scalar exercise to be played in a chromatic, or circular (circle of 4ths or 5ths) progression covering all major scales. It can also be used in minor keys, modes, other scales, or even backwards. Challenge yourself with different variations. This will help you with everything else that we do as an ensemble!



## Eights - Two Mallet Double Stops or Double Vertical Interval



Hands can be played together or separate at any time



## Chromatic Runs Crossing - Two Mallets



Speed - Two Mallets Or Single Independent Strokes

Major Pattern

The Major Pattern is written in 4/4 time. The first staff begins with a treble clef and a repeat sign. It contains three measures of eighth-note runs: the first two measures are ascending eighth-note pairs, and the third measure is a descending eighth-note pair. The second staff continues with four measures of eighth-note runs, alternating between ascending and descending pairs. The third staff concludes the pattern with four measures, including a final measure with a fermata and a double bar line. A bass staff below the third staff shows the corresponding bass line with two notes.

Minor Pattern

The Minor Pattern is written in 4/4 time. The first staff begins with a treble clef and a repeat sign. It contains three measures of eighth-note runs: the first two measures are ascending eighth-note pairs, and the third measure is a descending eighth-note pair. The second staff continues with four measures of eighth-note runs, alternating between ascending and descending pairs. The third staff concludes the pattern with four measures, including a final measure with a fermata and a double bar line. A bass staff below the third staff shows the corresponding bass line with two notes.

# Double Lateral Strokes

Level 1 - One lateral at a time (A:43, B:34, C:12, D:21)

Musical notation for Level 1 exercise, first system. It consists of two staves (treble and bass clef) in 4/4 time. The right hand plays a sequence of chords: C4-E4-G4, C4-E4-G4, C4-E4-G4, C4-E4-G4. The left hand plays a sequence of chords: F3-A3-C4, F3-A3-C4, F3-A3-C4, F3-A3-C4.

Musical notation for Level 1 exercise, second system. It consists of two staves (treble and bass clef) in 4/4 time. The right hand plays a sequence of chords: C4-E4-G4, C4-E4-G4, C4-E4-G4, C4-E4-G4. The left hand plays a sequence of chords: F3-A3-C4, F3-A3-C4, F3-A3-C4, F3-A3-C4.

Level 2

Musical notation for Level 2 exercise. It consists of two staves (treble and bass clef) in 4/4 time. The right hand plays a sequence of chords: C4-E4-G4, C4-E4-G4, C4-E4-G4, C4-E4-G4. The left hand plays a sequence of chords: F3-A3-C4, F3-A3-C4, F3-A3-C4, F3-A3-C4.

All exercises with every combination:

- 12-34 32-12
- 12-43 34-21
- 21-34 43-12
- 21-43 43-12

Level 3

Musical notation for Level 3 exercise. It consists of two staves (treble and bass clef) in 4/4 time. The right hand plays a sequence of chords: C4-E4-G4, C4-E4-G4, C4-E4-G4, C4-E4-G4. The left hand plays a sequence of chords: F3-A3-C4, F3-A3-C4, F3-A3-C4, F3-A3-C4.

Level 4

Musical notation for Level 4 exercise. It consists of two staves (treble and bass clef) in 4/4 time. The right hand plays a sequence of chords: C4-E4-G4, C4-E4-G4, C4-E4-G4, C4-E4-G4. The left hand plays a sequence of chords: F3-A3-C4, F3-A3-C4, F3-A3-C4, F3-A3-C4.

Level 5

Musical notation for Level 5 exercise. It consists of two staves (treble and bass clef) in 4/4 time. The right hand plays a sequence of chords: C4-E4-G4, C4-E4-G4, C4-E4-G4, C4-E4-G4. The left hand plays a sequence of chords: F3-A3-C4, F3-A3-C4, F3-A3-C4, F3-A3-C4.

# 4 Double Vertical Strokes - Major

Level 1A - Fifths (1 - 5)

Musical notation for Level 1A - Fifths (1 - 5). The piece is in 4/4 time and consists of two staves: a treble clef staff and a bass clef staff. The treble staff contains four measures of quarter notes, each pair forming a fifth (C4-G4, D4-A4, E4-B4, F4-C5). The bass staff contains four measures of quarter notes, each pair forming a fifth (F3-C4, G2-D3, A2-E3, B2-F3).

Musical notation for Level 1A - Fifths (1 - 5). The piece is in 4/4 time and consists of two staves: a treble clef staff and a bass clef staff. The treble staff contains four measures of quarter notes, each pair forming a fifth (G4-D5, A4-E5, B4-F5, C5-G5). The bass staff contains four measures of quarter notes, each pair forming a fifth (C4-G4, D4-A4, E4-B4, F4-C5).

Level 1B - Fifths (3 - 7)

Musical notation for Level 1B - Fifths (3 - 7). The piece is in 4/4 time and consists of two staves: a treble clef staff and a bass clef staff. The treble staff contains four measures of quarter notes, each pair forming a fifth (E4-B4, F4-C5, G4-D5, A4-E5). The bass staff contains four measures of quarter notes, each pair forming a fifth (C4-G4, D4-A4, E4-B4, F4-C5).

Musical notation for Level 1B - Fifths (3 - 7). The piece is in 4/4 time and consists of two staves: a treble clef staff and a bass clef staff. The treble staff contains four measures of quarter notes, each pair forming a fifth (F4-C5, G4-D5, A4-E5, B4-F5). The bass staff contains four measures of quarter notes, each pair forming a fifth (C4-G4, D4-A4, E4-B4, F4-C5).

Level 2 - Two Different Fifths (1 - 5, 3 - 7)

Musical notation for Level 2 - Two Different Fifths (1 - 5, 3 - 7). The piece is in 4/4 time and consists of two staves: a treble clef staff and a bass clef staff. The treble staff contains four measures of quarter notes, each pair forming a fifth (C4-G4, D4-A4, E4-B4, F4-C5). The bass staff contains four measures of quarter notes, each pair forming a fifth (C4-G4, D4-A4, E4-B4, F4-C5).

Musical notation for Level 2 - Two Different Fifths (1 - 5, 3 - 7). The piece is in 4/4 time and consists of two staves: a treble clef staff and a bass clef staff. The treble staff contains four measures of quarter notes, each pair forming a fifth (G4-D5, A4-E5, B4-F5, C5-G5). The bass staff contains four measures of quarter notes, each pair forming a fifth (C4-G4, D4-A4, E4-B4, F4-C5).



Level 3 - Rhythmic Variation (1 - 5, 3 - 7)

# 6 Double Vertical Strokes - Minor

## Level 1A - Fifths (1 - 5)

Musical notation for Level 1A - Fifths (1 - 5). The piece is in 4/4 time and the key signature has one flat (B-flat). The first four measures feature a sequence of chords: B-flat major (B-flat, D, F), C major (C, E, G), D minor (D, F, A-flat), and E-flat major (E-flat, G, B-flat). The fifth measure is a whole rest. The final two measures feature a sequence of chords: F major (F, A, C), G major (G, B, D), and A-flat major (A-flat, C, E-flat).

Musical notation for Level 1A - Fifths (1 - 5). The piece is in 4/4 time and the key signature has one flat (B-flat). The first four measures feature a sequence of chords: B-flat major (B-flat, D, F), C major (C, E, G), D minor (D, F, A-flat), and E-flat major (E-flat, G, B-flat). The fifth measure is a whole rest. The final two measures feature a sequence of chords: F major (F, A, C), G major (G, B, D), and A-flat major (A-flat, C, E-flat).

## Level 1B - Fifths (3 - 7)

Musical notation for Level 1B - Fifths (3 - 7). The piece is in 4/4 time and the key signature has one flat (B-flat). The first four measures feature a sequence of chords: B-flat major (B-flat, D, F), C major (C, E, G), D minor (D, F, A-flat), and E-flat major (E-flat, G, B-flat). The fifth measure is a whole rest. The final two measures feature a sequence of chords: F major (F, A, C), G major (G, B, D), and A-flat major (A-flat, C, E-flat).

Musical notation for Level 1B - Fifths (3 - 7). The piece is in 4/4 time and the key signature has one flat (B-flat). The first four measures feature a sequence of chords: B-flat major (B-flat, D, F), C major (C, E, G), D minor (D, F, A-flat), and E-flat major (E-flat, G, B-flat). The fifth measure is a whole rest. The final two measures feature a sequence of chords: F major (F, A, C), G major (G, B, D), and A-flat major (A-flat, C, E-flat).

## Level 2 - Two Different Fifths (1 - 5, 3 - 7)

Musical notation for Level 2 - Two Different Fifths (1 - 5, 3 - 7). The piece is in 4/4 time and the key signature has one flat (B-flat). The first four measures feature a sequence of chords: B-flat major (B-flat, D, F), C major (C, E, G), D minor (D, F, A-flat), and E-flat major (E-flat, G, B-flat). The fifth measure is a whole rest. The final two measures feature a sequence of chords: F major (F, A, C), G major (G, B, D), and A-flat major (A-flat, C, E-flat).

Musical notation for Level 2 - Two Different Fifths (1 - 5, 3 - 7). The piece is in 4/4 time and the key signature has one flat (B-flat). The first four measures feature a sequence of chords: B-flat major (B-flat, D, F), C major (C, E, G), D minor (D, F, A-flat), and E-flat major (E-flat, G, B-flat). The fifth measure is a whole rest. The final two measures feature a sequence of chords: F major (F, A, C), G major (G, B, D), and A-flat major (A-flat, C, E-flat).

Level 3 - Rhythmic Variation (1 - 5, 3 - 7)

# 8 Single Alternating Strokes

See Double Verticals for the first 3.5 levels (Perform the patterns below for all of them)

example: 13 - 24, 24 - 13, 14 - 23, 23 - 14

Musical notation for example patterns 13-24 and 24-13. The notation is in 4/4 time and consists of two staves. The first staff has a treble clef and the second staff has a bass clef. The first measure shows a sequence of notes labeled '13' and '24'. The second measure shows a sequence of notes labeled '24' and '13'. The third measure shows a sequence of notes labeled '14' and '23'. The fourth measure shows a sequence of notes labeled '23' and '14'. The notation ends with a double bar line and repeat dots.

Level 4 - Interlocking single alternating, use all voicings from double verticals

Musical notation for Level 4. The notation is in 4/4 time and consists of two staves. The first staff has a treble clef and the second staff has a bass clef. The notation shows a sequence of notes in the treble staff and a sequence of notes in the bass staff, interlocking single alternating strokes. The notation ends with a double bar line and repeat dots.

Musical notation for Level 5. The notation is in 4/4 time and consists of two staves. The first staff has a treble clef and the second staff has a bass clef. The notation shows a sequence of notes in the treble staff and a sequence of notes in the bass staff, interlocking single alternating strokes. The notation ends with a double bar line and repeat dots.

Level 5 - Change every two beats

Musical notation for Level 5 - Change every two beats. The notation is in 4/4 time and consists of two staves. The first staff has a treble clef and the second staff has a bass clef. The notation shows a sequence of notes in the treble staff and a sequence of notes in the bass staff, interlocking single alternating strokes. The notation ends with a double bar line and repeat dots.

Level 6 - Change every beat

Musical notation for Level 6 - Change every beat. The notation is in 4/4 time and consists of two staves. The first staff has a treble clef and the second staff has a bass clef. The notation shows a sequence of notes in the treble staff and a sequence of notes in the bass staff, interlocking single alternating strokes. The notation ends with a double bar line and repeat dots.

Level 7

Musical notation for Level 7. The notation is in 4/4 time and consists of two staves. The first staff has a treble clef and the second staff has a bass clef. The notation shows a sequence of notes in the treble staff and a sequence of notes in the bass staff, interlocking single alternating strokes. The notation ends with a double bar line and repeat dots.